

Outer Dowsing Offshore Wind

Updated Statement of
Community Consultation
(SoCC)



January 2023



**OUTER
DOWSING**
OFFSHORE WIND

Table of Contents

- 1. Introduction 4
 - Introduction of an Alternative Onshore Cable Route and associated Phase 1A Consultation 4
- 2. About The Project - Outer Dowsing Offshore Wind 6
 - Introduction 6
 - Need for the Project 8
 - Typical Components of an Offshore Wind Project 9
 - Our Onshore Proposals and Search Zone 10
 - Project and Community Consultation Timeline 11
- 3. About The Applicant: Outer Dowsing Offshore Wind 14
- 4. Offshore Transmission Network Review (OTNR) 15
- 5. Environmental Impact Assessment (EIA) Process and Information 16
- 6. Consenting Processes and Consultation 17
- 7. Who Will Be Consulted? 18
 - Consultation Zones 20
- 8. What Will the Project Consult On? 22
- 9. Consultation Methods 23
 - Open Communication 23
 - Consultation Website 23
 - Events 23
 - Literature 24
 - Advertising 24
- 10. How This SoCC and Other Consultation Materials Can Be Accessed 25
- 11. How Will Stakeholder Feedback Be Utilised? 26
- 12. Contact Details and Further Information 28
 - REQUEST ACCESSIBLE FORMAT 28

List of Figures

- Figure 1:** Location of the Project's proposed offshore wind farm6
- Figure 2** Search Zone for the Onshore and Offshore Infrastructure. This Search Zone has been updated to include the newly proposed alternative route to the Weston Marsh connection option as shown in yellow hash. The offshore Project Array Area is the area within which the generating station will be situated.....7
- Figure 3:** Typical components of an offshore wind farm. In line with the Project's development phases, ODOW will be consulting with stakeholders on aspects associated with each of the components..... 8
- Figure 4:** Onshore Search Zone and Substation Search Zones.....9
- Figure 5:** Updated Project and Community Consultation Timeline.....10
- Figure 6:** The local authorities highlighted on this map, have been consulted on the contents of this SoCC. This includes both the host and neighbouring local authorities.....16



1. Introduction

This document is the updated Statement of Community Consultation ('SoCC') for the proposed Outer Dowsing Offshore Wind project ('ODOW') hereafter referred to as 'the Project'. It outlines how we will consult with the local communities about our proposals to develop the Project. Outer Dowsing Offshore Wind, a joint venture between Macquarie Green Investment Group Limited (GIG) (now Corio Generation) and TotalEnergies, is publishing this Statement of Community Consultation (SoCC) as required under Section 47 of the Planning Act 2008 ('the Act'), for the Project. The purpose of this document is to set out how we will undertake consultation with communities prior to submitting an application for a Development Consent Order (DCO) under the Act.

Introduction of an Alternative Onshore Cable Route and associated Phase 1A Consultation

This SoCC has been updated in response to the introduction of an alternative onshore cable route that is now being considered alongside the previously presented route by the Project as a result of stakeholder feedback. A new phase of consultation has therefore been introduced in this SoCC ('Phase 1A (Alternative Route)') to provide ODOW with the opportunity to engage with the local communities on the proposed alternative route. The proposed alternative route will not have any effect on the Project's current landfall or onshore substation search zones, and will only be taken forward as a potential route in relation to the Weston Marsh connection option (for details on the two proposed connection options See – Section 4).

The details of the proposed alternative route and the associated additional phase of consultation are outlined in the below relevant sections of this SoCC:

- ✿ Alternative Route Search Zone – Figure 2 and Figure 4
- ✿ Updated Community Consultation Timeline – Section 2
- ✿ Consultation Zone - Figure 6
- ✿ How to contact us – Section 12. Should you have any queries or concerns, or you're unsure what this means for you, please don't hesitate to contact us at any time.

The purpose of the consultation is to provide a forum for the Project to inform the local community of the Project's proposals with a focus on providing opportunities for stakeholders, local residents and community groups to have their say and feedback directly to the Project team. The Project's pre- application consultation consists of three phases (Figure 5); Phase 1 was carried out in November 2022 and introduced the Project and mapped out our initial high-level proposals. Feedback was obtained on these initial high level proposals from the local communities. Phase 1A (Alternative Route) aims to introduce the alternative route to local communities who may be affected by this new proposal, introduce the Project and its proposals to those who have not yet been consulted and provide an opportunity for all interested parties to provide feedback. Phase 2 will present and seek views on the development of the proposals to that point. That will include consultation on the results of our environmental surveys and studies (which will be presented in our Preliminary Environmental Information Report ('PEIR')). Feedback from the phases of pre-application consultation will be taken into account when finalising the Project's DCO Application.

This SoCC sets out:

- ✿ Information regarding the Project's background;
- ✿ How the application for development consent will progress;
- ✿ How we have identified who to consult;
- ✿ Proposed consultation methods and materials; and
- ✿ How members of the community can continue to provide their feedback to help inform the Project as it develops.

This updated SoCC has been written in consultation with Lincolnshire County Council, East Lindsey District Council, Boston Borough Council and South Holland District Council as the host local authorities. Other neighbouring Local Planning Authorities (LPAs) have also been consulted including: North East Lincolnshire Council, West Lindsey District Council, North Kesteven District Council, South Kesteven District Council, Peterborough City Council, Fenland District Council and Borough Council of King's Lynn and West Norfolk.

2. About The Project

Introduction

The Project is a proposed offshore windfarm located approximately 54 kilometres (km) off the coast of Lincolnshire, England (Figure 1), comprising an offshore generating station (at this stage, covering an area of seabed of up to 500 km², which will be reduced to 300 km²) and offshore and onshore transmission infrastructure including any additional development¹.

The current Search Zone (which includes the Search Zone and Substation Search Zones shown in Figure 2, (the "Search Zone") for the offshore and onshore transmission infrastructure has been defined based on the latest recommendations of the Offshore Transmission Network Review² (OTNR process - see Section 4) and has been updated following stakeholder feedback.

The recommendations from the OTNR process were published on 07 July 2022 (Pathway to 2030 Holistic Network Design (HND)³ by National Grid Electricity System Operator (NGESO), which concluded two connection locations being progressed for further consideration for the Project – Weston Marsh and Lincolnshire Node. The Search Zone for the location of the Project infrastructure is shown in Figure 2 (this has been updated to include the search zone for the alternative route), noting that this area will be reduced once a single grid connection location is confirmed by NGESO and the site selection appraisal has identified the most appropriate cable route and onshore substation location for the adopted connection point.

The Project considers the pre-application consultation with the local community and stakeholders to be an integral part of the development process and intends for this document to outline a consultation roadmap, ensuring a process where all interested parties have the opportunity to participate.

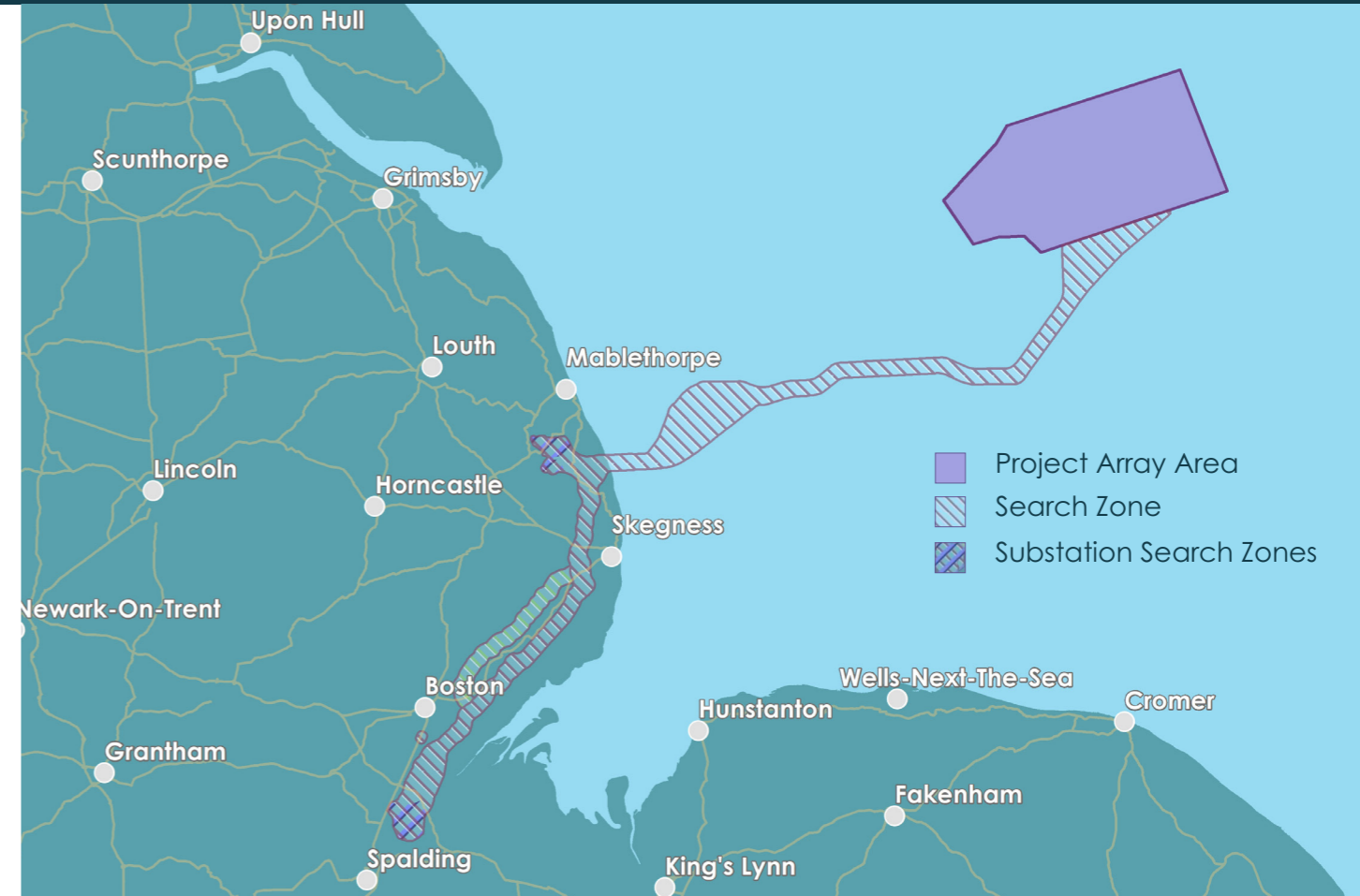


Figure 2: Search Zone for the Onshore and Offshore Infrastructure. This Search Zone has been updated to include the newly proposed alternative route to the Weston Marsh connection option as shown in yellow hash. The offshore Project Array Area is the area within which the generating station will be situated.



The Project is planned to have a generating capacity, of 1.5 GW, powering over 1.6 million households in the UK.

The exact size and capacity of the Project will be determined through a balanced consideration of the environmental, social, and technical implications of which the pre application consultation is a key component.

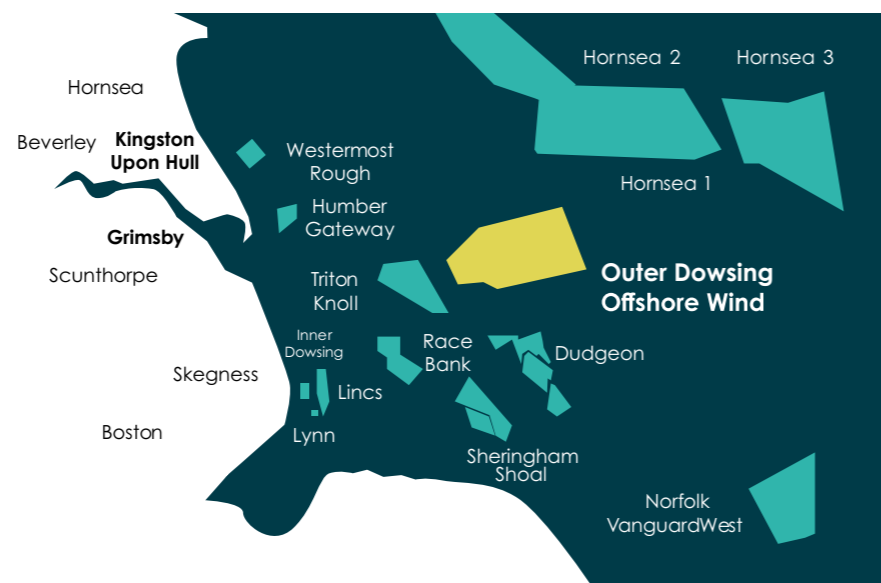


Figure 1: Location of the Project's proposed offshore wind farm

Need for the Project

The key drivers for renewable energy in the UK are reducing greenhouse gas emissions, providing increased energy security, and maximising economic opportunities for the UK and local economies. Green infrastructure development has been identified as one of the UK Government's COVID-19 pandemic economic recovery and post-Brexit strategies⁴ and advancing offshore wind projects is incorporated into the recently published 'British Energy Security Strategy'⁵. The Project is aiming to make a key contribution to the UK Government's ambition for over 50 Gigawatts (GW) of offshore by 2030.

As part of this strategy, investing in offshore wind generation has been listed as one of the principal elements of the UK Government's '10 Point Plan' contributing to net zero carbon emissions by 2050. The Project is aligned with these key drivers and will make a meaningful contribution to the decarbonisation of the UK economy as well as sustainable economic growth.

The Project is anticipated to avoid emissions equivalent to 2 million tonnes CO₂ per year of operations through the generation of renewable electricity, this is the equivalent to removing over 650,000 petrol cars from the road for the duration of the Project.



Typical Components of an Offshore Wind Project

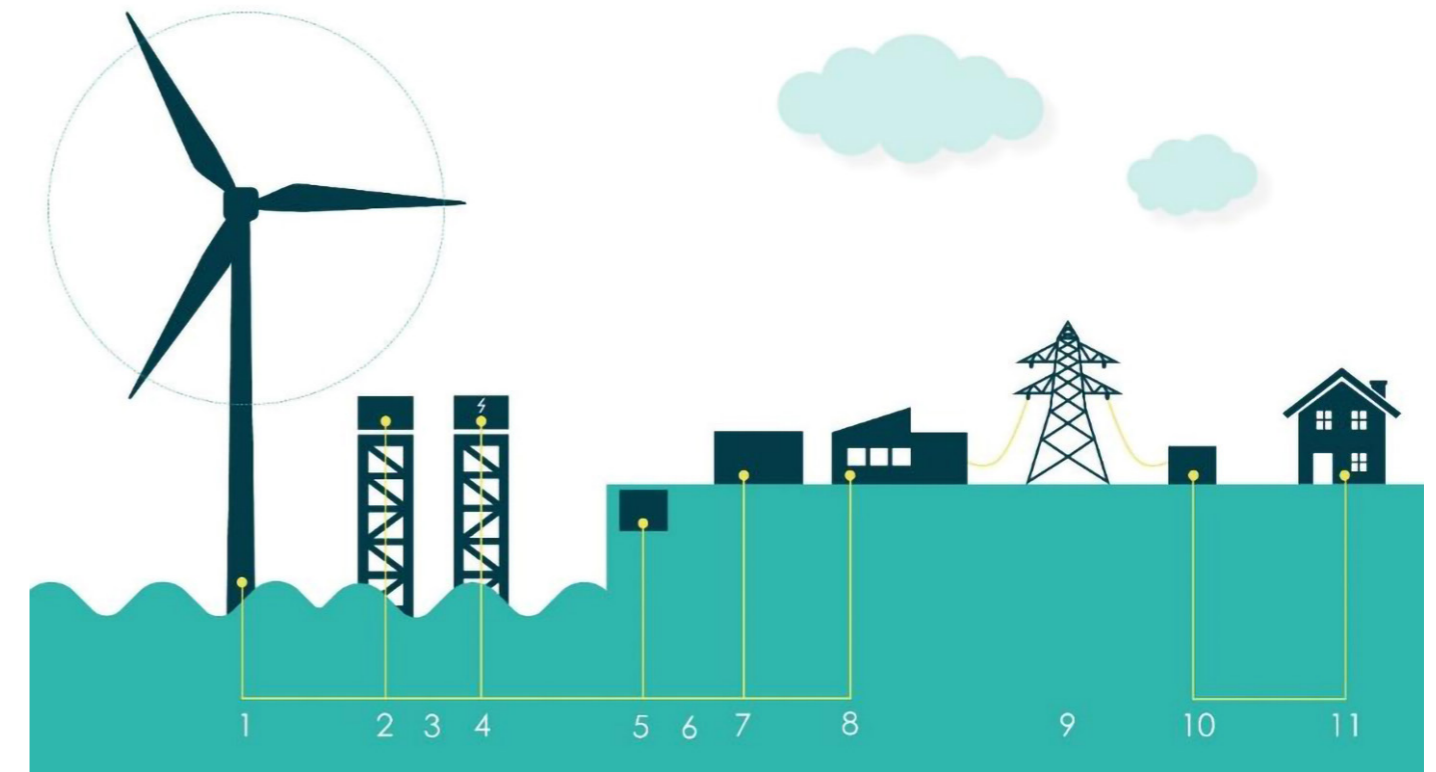


Figure 3: Typical components of an offshore wind farm. In line with the Project's development phases, ODOW will be consulting with stakeholders on aspects associated with each of the components.

- | | | |
|--|-------------------------------------|---------------------|
| 1 Offshore Wind Turbines and Inter Array Cable | 5 Transition Joint Bay | 10 Local Substation |
| 2 Offshore Substation | 6 Onshore export cable and landfall | 11 End User |
| 3 Offshore Export Cable | 7 Onshore substation | |
| 4 Offshore reactive compensation platform (optional) | 8 National Grid substation | |
| | 9 National Grid Power lines | |

The necessary infrastructure to build the Project will depend on the type of technology adopted and the length of the cable route.

Our Onshore Proposals and Search Zone

It is currently anticipated that the onshore infrastructure will be located within or close to the Search Zone as outlined in Figure 4. As well as cable and substation infrastructure, this is likely to include infrastructure such as temporary accesses; road upgrades; streets, public rights of way and footpath closures or diversions; drainage and temporary construction compounds - which are likely to be within the Search Zone or between the Search Zone and nearby major A roads. It is anticipated that further information on the location of the onshore infrastructure will be available at PEIR. This Search Zone has been updated to include the alternative onshore cable route that is also being considered as an option for the Weston Marsh grid connection following stakeholder feedback.

Onshore Search Zone

We are currently assessing the optimal cable route and onshore substation location options and we are seeking your feedback to help shape our proposals during our consultation process. Feedback from the consultation phases will be incorporated into the project design process, which will also be refined following the outcome of the OTNR (See – Section 4).

Onshore Substations Search Zones

Until we have secured a final grid connection, we currently have two search zones for the onshore substation. Only one of these zones, along with the accompanying onshore cable route search zone will be progressed once a final connection point is adopted.

Landfall Search Zone

The landfall search zone has been refined through environmental and technical assessments. There is only one landfall search zone as this has been assessed as the optimum search zone for both connection options.

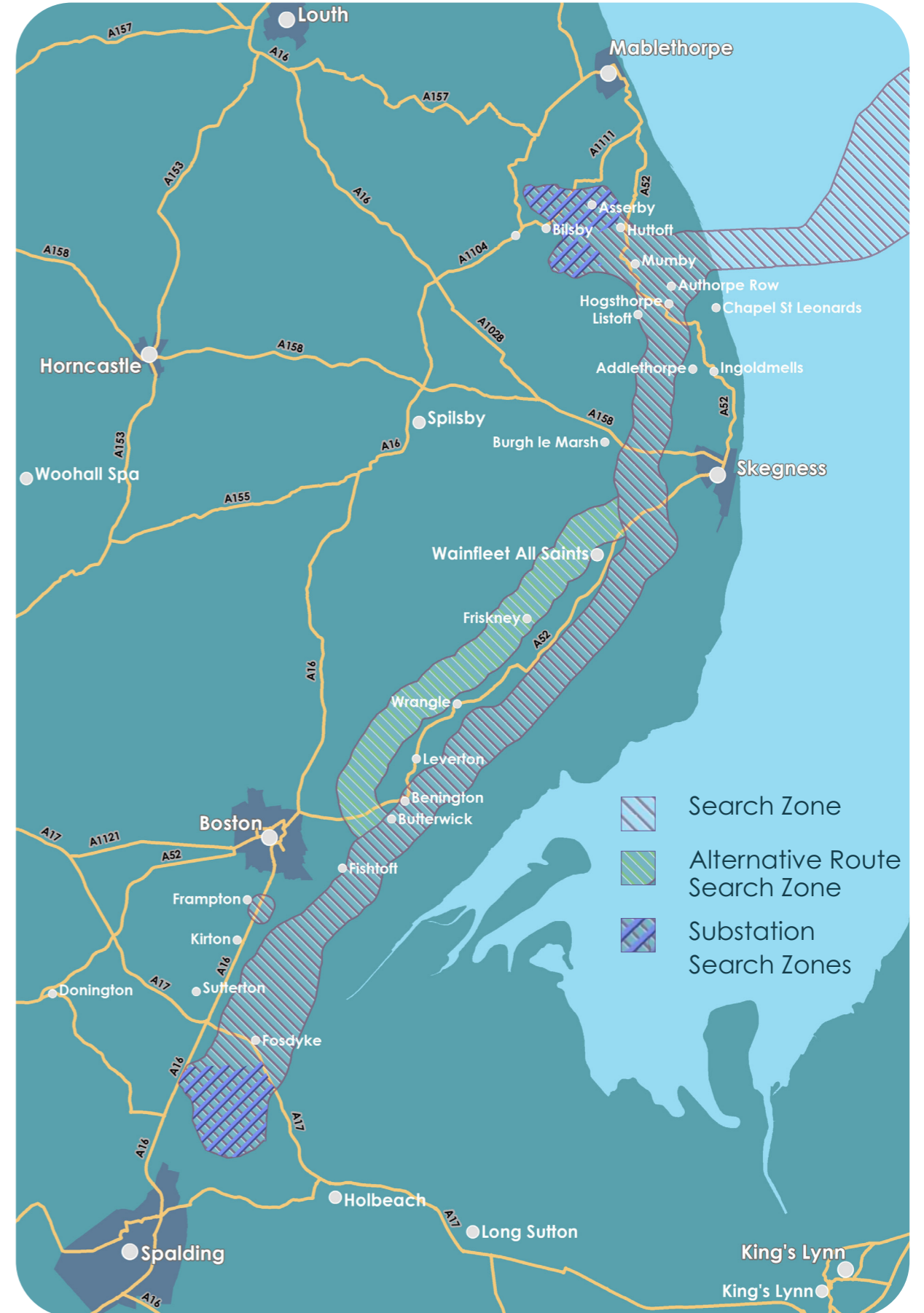


Figure 4: Onshore Search Zone and Substation Search Zones.

Project and Community Consultation Timeline

Following the conclusion of the Offshore Wind Leasing Round 4 tender process in February 2021, the Project was successful in securing Preferred Bidder status for an area in the southern North Sea (Figure 1).

Phase 1 Consultation

The phase one consultation was open to all interested members of the public featured in-person and virtual public information events. Information on how to attend these events and access the consultation information was widely publicised (See - Section 9).

Phase 1A Consultation

We have chosen to carry out an additional phase of consultation following stakeholder feedback received during the Phase 1 Consultation. Phase 1A Consultation will involve consulting the local communities on the proposed alternative route introduced earlier in this SoCC. The consultation will be open to all interested members of the public and will feature in person events and a virtual public information event. Information on how to attend these events and access the consultation information will be widely publicised (See - Section 9).

Phase 2 Consultation

This consultation will allow us to update you on our project plans, including how the feedback we received during the phase one consultation has been considered, as well as seek further feedback from communities. We will also publish our PEIR for consultation.

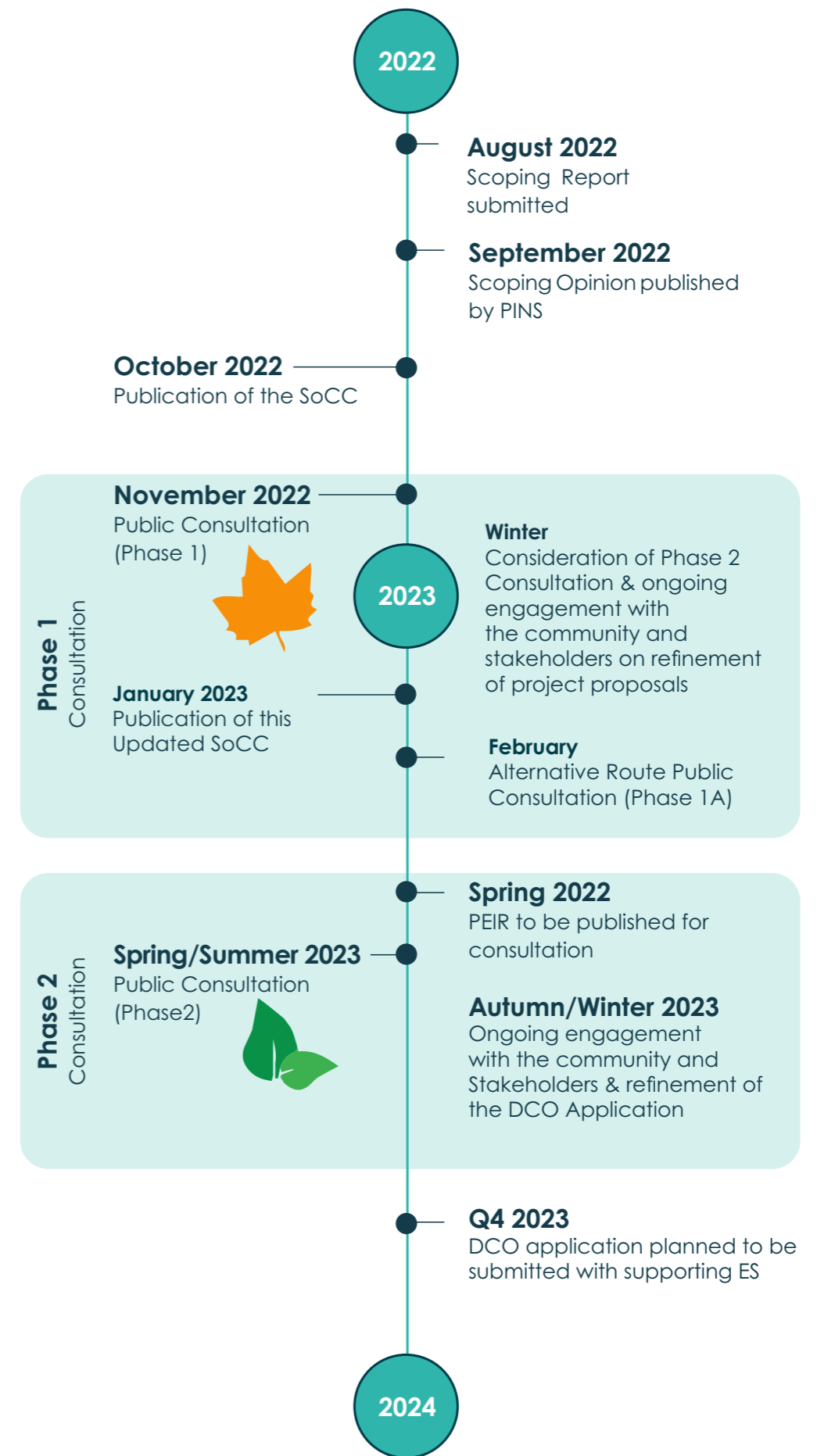


Figure 5: Updated Project and Community Consultation Timeline

3. About The Applicant: Outer Dowsing Offshore Wind

GTR4 Limited (trading as Outer Dowsing Offshore Wind) hereafter referred to as the 'Applicant', was successful in the Crown Estate offshore wind seabed licensing auction process securing Preferred Bidder status for an area in the southern North Sea. The project is being developed by Corio Generation (a wholly-owned Green Investment Group portfolio company) and TotalEnergies.

TotalEnergies is a global multi-energy company that produces and markets energies: oil and biofuels, natural gas and green gases, renewables and electricity.

Its over 100,000 employees are committed to energy that is ever more affordable, cleaner, more reliable and accessible to as many people as possible. Active in more than 130 countries, TotalEnergies puts sustainable development in all its dimensions at the heart of its projects and operations to contribute to the well-being of people.

As part of its ambition to get to net zero by 2050, TotalEnergies is building a portfolio of activities in renewables and electricity to reach 35 GW of gross production capacity from renewable sources and storage by 2025, and then 100 GW by 2030 with the objective of being among the world's top 5 producers of electricity from wind and solar energy.

TotalEnergies is already developing a portfolio of offshore wind projects with a total capacity of more than 11 GW, of which 2/3 are bottom-fixed and 1/3 are floating.

Corio Generation is a specialist offshore wind business, dedicated to harnessing the world's greatest energy supply. With a unique blend of sector-leading expertise and deep access to long-term capital, Corio Generation apply a long-term partnership approach to the creation and management of projects, taking them from origination, through development and construction, and into operations.

Corio Generation's 15 GW offshore wind pipeline is one of the largest in the world, spanning established and emerging markets, as well as floating and traditional fixed to the seabed technologies. These next generation offshore wind projects will help form the backbone of the net-zero global energy system while meeting the energy needs of communities and corporate off-takers sustainably, reliably, safely and responsibly.

Corio Generation is a Green Investment Group (GIG) portfolio company, operating on a standalone basis. GIG is a specialist green investor within Macquarie Asset Management, part of Macquarie Group.



4. Offshore Transmission Network Review (OTNR)

The OTNR was launched in July 2020 by the Secretary of State for BEIS and takes a holistic and strategic approach to the development of the offshore wind transmission system. The environmental, community and economic aspects are considered in this process while aiming to minimise any cumulative impacts from multiple adjacent offshore wind farm projects that may be constructed or operational either within the same timeframe, or successively. There is a particular focus upon the associated onshore infrastructure required to connect to the national transmission network. The OTNR aims to be consistent with the Government's ambition to deliver net zero emissions by 2050.

The OTNR is being led by BEIS with support from a number of partners including Ofgem (Great Britain's independent energy regulator) and National Grid Electricity System Operator (NGESO). NGESO is responsible for providing the Holistic Network Design (HND) that will include the transmission and connection arrangements for the Project.

On 7th of April 2022 the UK Government published the British Energy Security Strategy⁶, a new policy statement that further refines the context of the OTNR. The strategy includes specific proposals and commitments made in respect to offshore wind, including increasing the 2030 capacity target by 25 percent, with a new ambition of 50 GW of offshore wind by 2030. This increased ambition for offshore wind underlines the significance of the OTNR in giving explicit consideration to environmental and local impacts whilst ensuring the efficient and sustainable growth of green energy infrastructure to deliver the Government's net-zero emissions by 2050.

Currently, the Project is awaiting the final definition of its grid connection arrangements, based on the HND design proposals submitted by NGESO to BEIS and Ofgem as part of the OTNR process. The provisional outcomes of this process include two possible grid connection options: Lincolnshire Node or Weston Marsh. Once the final outcome is received from the OTNR, the confirmation of grid connection will determine where and how the Project will connect to the grid as well as the onshore cable route needed to reach this grid connection. The Project will provide regular updates on the OTNR process, outcomes and what this means for the progress of the project by consulting with stakeholders throughout.

5. Environmental Impact Assessment (EIA) Process and Information

In accordance with Regulation 12 (consultation statement requirements) of The Infrastructure Planning (Environmental Impact Assessment) Regulations 2017, the Project is an EIA development⁷. As such, the Project will undertake an EIA and prepare an Environmental Statement (ES) in accordance with Regulation 5 of The Infrastructure Planning (Environmental Impact Assessment) Regulations 2017. The methodology and scope of the EIA will be informed through consultation with the relevant regulatory and environmental bodies, the Secretary of State (SoS), and the Local Planning Authorities (LPAs). The following reports (listed below) will be subject to statutory consultation as part of the EIA process:

Scoping Report –

The Scoping Report was informed using desk-based research on the existing offshore and onshore environments in the location of the proposed project and supported by surveys and data analysis. This report presents the indicative key project parameters which will inform the Project Design Envelope, and which will include all associated onshore and offshore infrastructure that make up the project. These elements will be subject to further refinement throughout the subsequent project development process. The report also describes the methodologies that will be applied to further characterise the existing environments and how any potential impacts will be assessed. The Scoping Report was submitted to the Planning Inspectorate in July 2022 with a request for an EIA scoping opinion. A scoping opinion refers to the range of issues which the Secretary of State considers should be included in an EIA. The Scoping Opinion was published in September 2022.⁸

Preliminary Environmental Information Report (PEIR) –

A PEIR will be published on the project website, which will provide preliminary environmental information in the form of a preliminary environmental impact assessment for the Project. The study areas will be determined on a receptor-by-receptor basis, will be clearly defined as the EIA progresses and will be agreed with relevant statutory stakeholders. The PEIR will be published to support the statutory pre-application consultation requirements of the Planning Act 2008 (namely Section 42, Section 47 and Section 48 consultations). As part of the consultations, copies of the PEIR reports will be made available as the Project conducts the public consultation and the Project will be seeking feedback from local communities and other stakeholders on the PEIR.

Environmental Statement (ES) –

The ES will incorporate the final EIA for the Project, building on the content of the PEIR and incorporating changes and updates in response to the statutory consultations, as well as the results of any further surveys and studies undertaken since the production of the PEIR. It will also describe any changes made to the Project following consultation and any mitigation measures that are proposed.

6. Consenting Processes and Consultation

The Project includes an offshore generating station that will have a proposed capacity in excess of 100 Megawatts (MW) offshore, therefore under Section 15 of the Planning Act 2008 it is classified as a Nationally Significant Infrastructure Project (NSIP)⁹. As such, the Project must apply for a Development Consent Order (DCO) to build and operate the Project. The DCO process was created to streamline the consenting of large infrastructure projects and to ensure transparency and public participation.

The application process will be managed by the Planning Inspectorate (The Inspectorate) and examined by an Examining Authority, which will produce a recommendations report, before a decision is made by the Secretary of State (SoS) for Business, Energy & Industrial Strategy (BEIS). The Local Planning Authority (LPA) plays an important consultative role in the process but is not the decision-maker as it would be for smaller projects applied for under the Town and Country Planning process. If granted, the DCO will consent the offshore wind farm, the cables and associated electrical infrastructure as well as the onshore grid connection works (and any other associated development included in the application).

Pre-application consultation is a legal obligation for NSIPs, and the Project values early engagement with stakeholders. This document begins the statutory phase of consultation pursuant to Section 47 of the Planning Act 2008, which sets out the applicant's duty to consult with the local community on an NSIP.



The local community will also be invited to provide feedback on the Project's proposals and, as such, have the opportunity to influence elements of the design and development processes before the submission of the DCO application. The Project's aim is to develop its proposals collaboratively and responsibly, taking account of local community interests.

The Project's pre-application consultation must be deemed adequate by The Inspectorate. The Project will be required to show that the relevant stakeholders have been consulted, that it has complied with this SoCC, and publicised the application in the required manner.

As the Project lies in UK waters, a Marine Licence (ML) will be required to build and operate the offshore elements of the Project, which would be granted under the Marine & Coastal Access Act 2009 with the intention being to seek the deemed consent of these licences as part of the DCO.

7. Who Will Be Consulted?

Communities and individuals living within the vicinity of the Project will be consulted, as well as anyone who may be interested or feel in any way that they may be impacted by the Project.

The Project encourages interested parties to get in touch via the Project's communication lines, including the dedicated project email address (contact@outerdowsing.com), Freepost (FREEPOST ODOU) Freephone information line (0808 175 2970). Anyone can also register their interest via the Project website (www.outerdowsing.com).

Consultation on the Project will also involve relevant parish and town councils, area committees, community groups, organisations representing local businesses and tourist boards. The Project will collaborate with LPAs to identify key community groups, and a range of statutory and non-statutory groups will be consulted including:

- 🌿 Local Planning Authorities (LPAs);
- 🌿 Local Interest Groups (such as Lincolnshire Wildlife Trust);
- 🌿 Parish and Town Councils;
- 🌿 Owners, tenants and occupiers of the land affected by the DCO application;
- 🌿 Resident, community, tourism and business organisations;
- 🌿 Individuals and members of the public;
- 🌿 Seldom heard voices, minority groups and those with protected characteristics;
 - We recognise that some individuals or groups may not find our proposed consultation methods suited to their needs, we will therefore identify a number of organisations representing these groups. These organisations will be contacted at the start of each consultation phase to ensure that our approach best meets the needs of its members.
 - ODOU will also be making provision for people who do not have access to the internet and ensure documents are made available via post, choosing accessible venues for public information events, producing consultation materials in accessible formats, and offering direct 1-2-1 engagement;
- 🌿 Commercial stakeholders (including asset owners and the commercial fisheries industry); and
- 🌿 Environmental bodies.

The Project will consult widely in accordance with this SoCC and encourage participation in the consultation by any person or group who is interested in the proposed Project¹⁰.



Consultation Zones

Consultation zones have been defined for the purposes of publicising the consultation directly to the local community, recognising that levels of potential impact and interest are likely to vary with geography. These consultation zones will be refined in line with the Project's development phases as outlined below.

Core Consultation Zone

Phase 1 - For the Phase 1 Consultation (See - Figure 5), the core consultation zone comprised a minimum distance of 500 metres either side of the onshore search zone shown in Figure 4, extending to 1,000 metres around the onshore substation search zones (Figure 6 – yellow hash).

Phase 1A (Alternative Route) – Given the introduction of an alternative route that is being considered for the Weston Marsh Connection Option (See - Section 1). The core consultation zone for this option has been defined using the same approach as Phase 1 (i.e. 500m either side of the search zone) but applied only to the alternative route search zone as shown in Figure 4 (Figure 6 – white hash).

The Phase 1 and 1A consultation exercises will help guide the refinement of the onshore search area. Phase 2 consultation will adopt the same approach as defined for Phase 1, but will be applied to the revised onshore search zone which will be influenced by the Phase 1 and 1A consultation, the design process and the results of the PEIR. Properties within the relevant zone, will receive direct communications such as leaflets from us in the post (See – Section 9).

Outer Consultation Zone

People who may be interested in the wider potential impacts of the proposed Project, such as transport, visual impact and creating new jobs. This zone includes both the host and neighbouring Local Authorities, all of whom have been consulted on the contents of this SoCC (Figure 6). This zone will be reached through local and social media (See – Section 9).

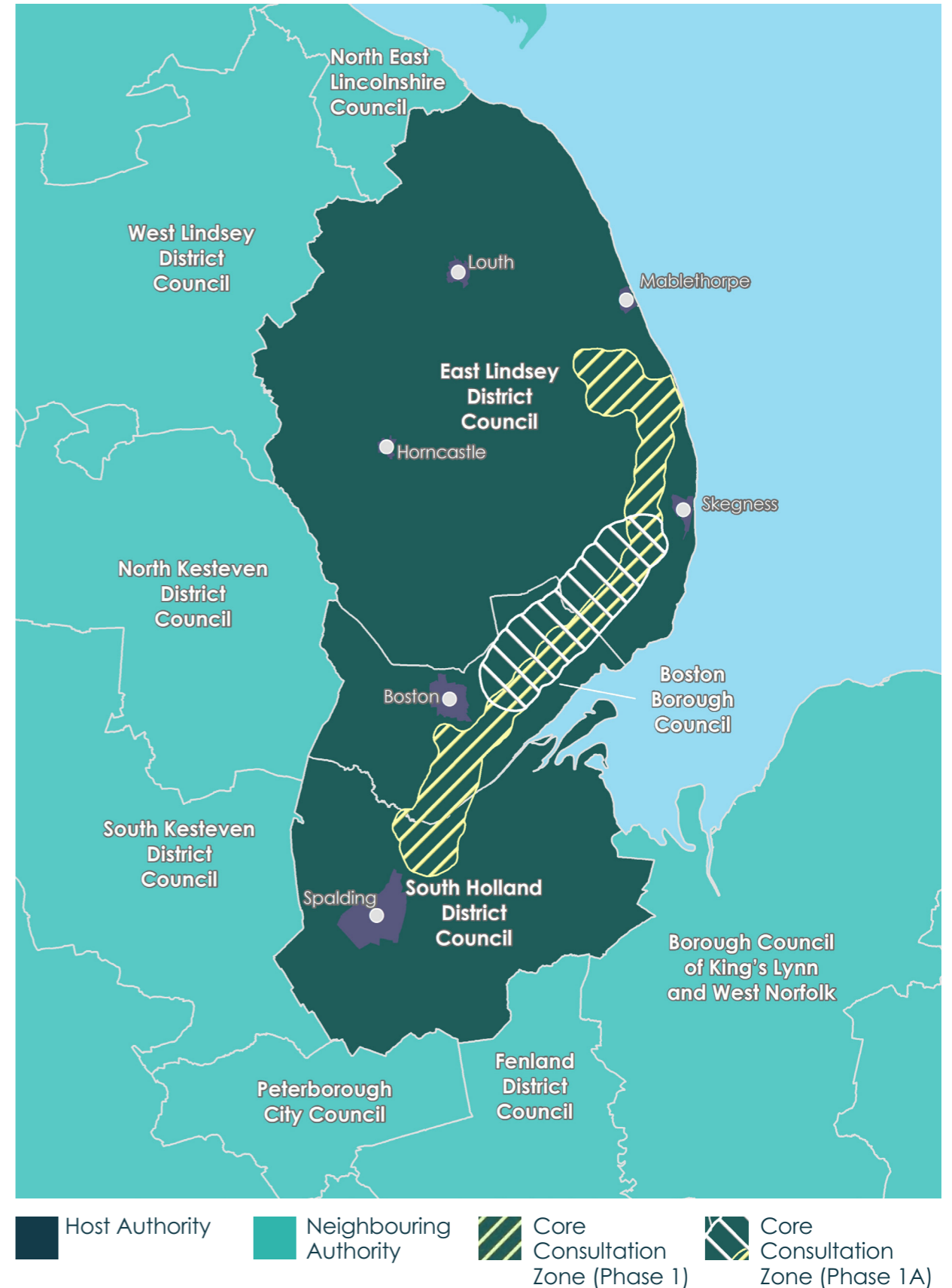


Figure 6: The local authorities highlighted on this map, have been consulted on the contents of this SoCC. This includes both the host and neighbouring local authorities.

8. What Will the Project Consult On?

The Project encourages local communities to give their views on how the Project proposals may affect them or their local area. The Project will be seeking feedback to help develop the Project's proposals regarding issues such as, but not limited to:

- Environmental impacts;
- Economic impacts; and
- Social impacts.

As mentioned in Section 4 of this SoCC, as part of the EIA and DCO processes, the Project will consult with local communities and stakeholders throughout the preparation and publication of the PEIR and during the preparation of the ES. The methods of consultation that will be adopted by the Project are outlined in Section 9 of this SoCC.

More information will be made available regarding the technical aspects of the Project as proposals develop. The Project encourages local communities to give their views about how the Project may affect them or their local area and will be seeking feedback to help develop the Project's proposals regarding, but not limited to:

- The site selection process for the location of the onshore substation area and refinement of the onshore cable corridor search area;
- The offshore environment including consultation with the Marine Management Organisation (MMO) and commercial fisheries organisations;
- Short-term and temporary impacts during construction, such as traffic movements, local amenities and the environment; and
- Long-term operational considerations, such as on the local environment, landscape and visual amenity.



Aim of the Consultation

The aim of the Project's Consultation is to ensure that anyone that has the potential to be directly affected by the Project is made aware of the Project's proposals and has an opportunity to ask questions and provide feedback. Furthermore, feedback received from local communities will have the potential to influence the development of proposals.

9. Consultation Methods

As a result of the easing of government guidelines regarding the COVID-19 pandemic, the Project is adopting a 'hybrid' approach to the statutory consultation on the Project. This means that the Project will focus on having a mix of virtual, written and face-to-face methods to publicise the consultation and engage with the community and relevant stakeholders.

The Project's pre-application consultation consists of three phases, Phase 1, Phase 1A (Alternative Route) and Phase 2 (pre and post PEIR publication respectively, see Figure 5).

Any physical or face-to-face consultation will be held in line with Government guidelines. If physical consultation is deemed unsafe or not permitted, the Project will rely on virtual and written methods of consultation alone. The following outlines the selected consultation methods interested parties are welcomed to engage with.

Open Communication

- Freephone** A freephone service is available for interested parties to call to ask questions and provide feedback: 0808 175 2970.
- Email** contact@outerdowsing.com
- Freepost** FREEPOST ODOW (no stamp or further address details needed on the envelope)

Consultation Website



Website

All Project Consultation material has been and will continue to be available to view and respond to during the consultation, this will include the latest information regarding availability of hard copies of select consultation materials at deposit locations, consultation activities and how to provide feedback, via the Project Website: <https://www.outerdowsing.com/document-library/>.

Events



Public Information Events

The Project will host both in-person events and virtual webinars during the Phase 1 Consultation. The Phase 1 Consultation included a round of public information events held on [dates to be added] at [locations to be added], and these events were open to all interested members of the public. They were advertised through the local press and through local councils, community access points and notice boards. The Project will host further in-person events and a virtual webinar during the Phase 1A and Phase 2 Consultations with a view to engage with stakeholders face-to-face for both remaining phases of the consultation. Each phase will include a round of public information events, located at suitable locations within the consultation zone, and will be open to all interested members of the public. At these virtual and face-to-face events, attendees will have the opportunity to explore informative materials on the Project and discuss the proposals with members of the Project team. They will be advertised through the local press and through local councils, community access points and notice boards.



Stakeholder Briefings

The Project will host a series of briefings with project stakeholders, including MPs, a number of locally elected members from within Lincolnshire County Council, East Lindsey District Council, Boston Borough Council and South Holland District Council, and relevant Parish Councils within the consultation area.



Community Liaison Groups (CLG) will be established at locations within the consultation area, to share information and engage in balanced discussions about the Project.

Literature

 Project Information Brochure	<p>A project overview brochure has been made available to inform stakeholders of the high-level proposals for the project and can be found on the Project website.</p>
 Leaflet Drop	<p>Prior to the Public Consultation Events, Prior to the Phase 1 Public Consultation Events, we distributed an information leaflet to residents and businesses within the Phase 1 Core Consultation Zone notifying them of the in person events being held on 01st, 04th, 06th & 11th of November and two webinars being held on 02nd and 03rd of November, as well as signposting the Project website. Prior to the Phase 1A and Phase 2 Public Consultation Events, we will distribute an information leaflet to residents and businesses within the relevant Core Consultation Zone (the Phase 11A (Alternative Route) Core Consultation Zone is shown outlined in Figure 6, Section 7) to notify them of the events as well as signposting the Project website for all the latest consultation information.</p>
 Project Newsletter	<p>The Project will produce a newsletter to provide updates on key project developments. Copies of the Project's newsletters will be made available on the project website.</p>
 Community Access Points	<p>Key project information will be distributed to a range of local information points throughout the consultation area (See - Section 12)</p>
 Email Updates	<p>The Project will use their mailing list to provide key project updates and information regarding consultation for those who subscribe, which can be done via the Project's website https://www.outerdowsing.com/get-in-touch.</p>

Advertising

 Statutory Notices	<p>Statutory notices will announce the publication of the SoCC via: Louth Leader (including Skegness Standard, Mablethorpe Leader, Horncastle News, Spilsby Standard and Market Rasen Mail), Boston Target, Boston Standard, Spalding Guardian, Spalding Voice, Spalding Today, Lincolnshire Echo, Lincolnshire Free Press, Lincolnshire Live and Fishing News. The proposed DCO Application will also be advertised in accordance with Section 48 of the Act and relevant Regulations there under.</p>
 Media	<p>At key stages throughout the project, information will be disseminated to the local press and media through news releases. The local media will also be used to advertise of public events such as exhibitions and public information days. Media will include: Louth Leader (including Skegness Standard, Mablethorpe Leader, Horncastle News, Spilsby Standard and Market Rasen Mail), Boston Target, Boston Standard, Spalding Guardian, Spalding Voice, Spalding Today, Lincolnshire Echo, Lincolnshire Free Press, Lincolnshire Live and Lincolnite.</p>
 Posters	<p>The Project will produce posters promoting participation in the consultation and will share them with local venues for display.</p>
 Social Media	<p>Social Media platforms will be used to promote the Public Information Events. Posts will be shared with known local groups and media channels.</p>

10. How This SoCC and Other Consultation Materials Can Be Accessed

A copy of this document and other consultation material will be made available via the Project website: <https://www.outerdowsing.com/document-library/> and, as appropriate, in hard copy at the below locations within the consultation area.



Libraries

The Lincolnshire County Council website contains opening hours and accessibility details for the following access points: <https://www.lincolnshire.gov.uk/libraries-archives/lincolnshire-library-service>.

We can also provide this information to you if you contact us (See – Section 12).

Mablethorpe Library and Customer Service Centre
 Stanley Avenue
 Mablethorpe
 Lincolnshire
 LN12 1DP

Skegness Library
 23 Roman Bank
 Skegness
 Lincolnshire
 PE25 2SA

Boston Library
 County Hall
 Boston
 Lincolnshire
 PE21 6DY

Pinchbeck Community Hub and Library
 48 Knight Street
 Pinchbeck
 Lincolnshire
 PE11 3RU



Council Offices

Lincolnshire County Council
 County Offices
 Newland
 Lincoln
 LN1 1YL

East Lindsey District Council
 The Hub
 Mareham Road
 Horncastle
 Lincolnshire
 LN9 6PH

South Holland District Council
 Council Offices
 Priory Road
 Spalding
 Lincolnshire
 PE11 2XE

Boston Borough Council
 Municipal Buildings
 West Street
 Boston
 PE21 8QR

11. How Will Stakeholder Feedback Be Utilised?

As part of the Project's DCO application, the Project has a duty as a developer to take responses to the statutory consultation process into account including, and particularly, those provided by local communities.

Using the feedback received, the Project will produce a Consultation Report¹¹ as part of the final DCO application setting out the following:

- ✿ Summary of the consultation process;
- ✿ How the consultation was undertaken in accordance with this SoCC document;
- ✿ How the statutory requirements were met;
- ✿ A summary of the liaison with LPAs to ensure consultation was tailored to local communities; and
- ✿ A summary of all consultation responses received and how the Project responded to each response in finalising the DCO application.



References

- ¹ Energy system balancing and network stability facilities may be included as part of the development, for example battery energy storage.
- ² <https://www.gov.uk/government/groups/offshore-transmission-network-review>
- ³ <https://www.nationalgrideso.com/future-energy/the-pathway-2030-holistic-network-design>
- ⁴ <https://www.instituteforgovernment.org.uk/sites/default/files/publications/Building-a-green-recovery.pdf>
- ⁵ https://assets.publishing.service.gov.uk/government/uploads/system/uploads/attachment_data/file/1069969/british-energy-security-strategy-web-accessible.pdf
- ⁶ https://assets.publishing.service.gov.uk/government/uploads/system/uploads/attachment_data/file/1069969/british-energy-security-strategy-web-accessible.pdf
- ⁷ The Planning Inspectorate's Advice Note Three may be helpful for further information related to this: Advice Note Three: EIA Notification and Consultation | National Infrastructure Planning (planninginspectorate.gov.uk)
- ⁸ <https://infrastructure.planninginspectorate.gov.uk/wp-content/ipc/uploads/projects/EN010130/EN010130-000035-EN010130-Scoping-Opinion.pdf>
- ⁹ The Planning Inspectorate's Advice Note Eight may be helpful for further information related to this: <https://infrastructure.planninginspectorate.gov.uk/legislation-and-advice/advice-notes/advice-note-eight-overview-of-the-nationally-significant-infrastructure-planning-process-for-members-of-the-public-and-others/>
- ¹⁰ The Planning Inspectorate's Advice Note Eight point One may be helpful for further information related to this: <https://infrastructure.planninginspectorate.gov.uk/legislation-and-advice/advice-notes/advice-note-8-1/>
- ¹¹ The Planning Inspectorate Advice Note Fourteen may be helpful for further information related to this <https://infrastructure.planninginspectorate.gov.uk/legislation-and-advice/advice-notes/advice-note-fourteen-compiling-the-consultation-report/>



12. Contact Details and Further Information



Email:

contact@outerdowsing.com



**Call our Freephone
information line:**

0808 175 2970



Visit our website:

www.outerdowsing.com



You can write to the Project free of charge at:

FREEPOST ODOW

(no stamp or further address details needed on the envelope)

Request accessible format

Should you require this document in hard copy, large print, audio or braille please contact the Project using the details provided above.

When responding to the Project's pre-application consultation, personal data will be stored in compliance with General Data Protection Regulation by the Project and will not be shared with third parties. Personal data may however be passed on to The Inspectorate to ensure that the Project's pre-application consultation is sufficient and in line with the planning process as a whole.