

Outer Dowsing Offshore Wind Guide to the Phase 2 Consultation Materials

Date: June 2023

Outer Dowsing Document No: 1.1

Internal Reference: PP1-ODOW-DEV-CS-GUI-0001

Rev: V1.0

Company:	Outer Dowsing Offshore Wind	Asset:	Whole Asset			
Project:	Whole Wind Farm	Sub Project/Package:	Whole Asset			
Document Title or Description:	1.1 Guide to the Phase 2 Consultation Materials					
Document Number:	PP1-ODOW-DEV-CS-GUI-0001	3 rd Party Doc No (If applicable):	N/A			
<i>Outer Dowsing Offshore Wind accepts no liability for the accuracy or completeness of the information in this document nor for any loss or damage arising from the use of such information.</i>						
Rev No.	Date	Status / Reason for Issue	Author	Checked by	Reviewed by	Approved by
V1.0	June 2023	Issue for Phase 2 Consultation	BT	RF	CJ	ODOW

Table of Contents

1	Guide to the Formal Consultation Materials.....	4
1.1	Document Purpose.....	4
1.2	Phase 2 Consultation.....	4
2	Where to find the Consultation documents and how to engage.....	6
2.1	Consultation Dates.....	6
2.2	Consultation Materials.....	6
2.3	Public Information Days and Online Events.....	7
3	Consultation Material Structure and Document List.....	8
3.1	Structure.....	8
3.2	Providing your feedback.....	8
3.3	Document List.....	9

List of Tables

Table 1	Part 1: Guide to the Phase 2 Consultation Submission.....	9
Table 2	Part 2: Draft Plans and Drawings.....	9
Table 3	Part 3: Draft Development Consent Order.....	10
Table 4	Part 4: Scoping Report.....	10
Table 5	Part 5: Consultation Summary.....	10
Table 6	Part 6 Preliminary Environmental Information Report.....	10
Table 7	Part 7: Draft Report to Inform Appropriate Assessment.....	16
Table 8	Part 8: Other Reports, Plans and Statements.....	17

1 Guide to the Formal Consultation Materials

1.1 Document Purpose

- 1.1.1 This document provides a guide to the documents Outer Dowsing Offshore Wind (the Applicant) is making available for Phase 2 Consultation on the Outer Dowsing Offshore Wind Project (The Project). It sets out the documents in Section 3 Consultation Material Structure and Document List, which have been made available, where they can be found, how to navigate the different Parts and Volumes and how to engage.
- 1.1.2 A version of this document known as the Guide to the Application will be submitted as part of the Application for the Development Consent Order (DCO).

1.2 Phase 2 Consultation

- 1.2.1 Phase 2 Consultation follows on from previous early engagement and Phase 1 consultation as shown in Figure 1 Consultation Timeline. A summary of the previous consultation can be viewed in Phase 2 Consultation document 5.1 Consultation Summary as detailed in Table 5 Part 5: Consultation .
- 1.2.2 The documents submitted as part of the Phase 2 Consultation are intended to provide sufficient information and detail to those taking part in the statutory consultation process to understand the nature, scale, location, and likely significant environmental effects of the Project, based on the information available at this stage, so that they can make an informed contribution through the statutory pre-application consultation requirements of the 2008 Act and the EIA Regulations. Phase 2 documents include the Preliminary Environmental Information Report (PEIR) for consultation to inform the DCO Application as part of the Nationally Significant Infrastructure Project (NSIP) Process.
- 1.2.3 The Project is seeking feedback on this submission from statutory consultees, local communities and interested parties through this statutory process (namely the Section 42, 47 and 48 consultation requirements of the 2008 Act).
- 1.2.4 The Project welcomes comments on the work to date and intends to continue to engage with relevant stakeholders throughout the remaining pre-application period on material updates or changes to the proposed Project and the assessments presented within the PEIR submitted as part of the suite of documents for Phase 2 Consultation, as it prepares the final DCO application.
- 1.2.5 Following consultation on the PEIR, assessments and project refinement will be undertaken to be detailed in the documentation prepared for the final DCO application.
- 1.2.6 A summary of all the consultation responses received during the statutory consultation process will be presented in a Consultation Report, which will set out how the Applicant has had regard to the consultation in preparing the final Application. This will form part of the DCO application.

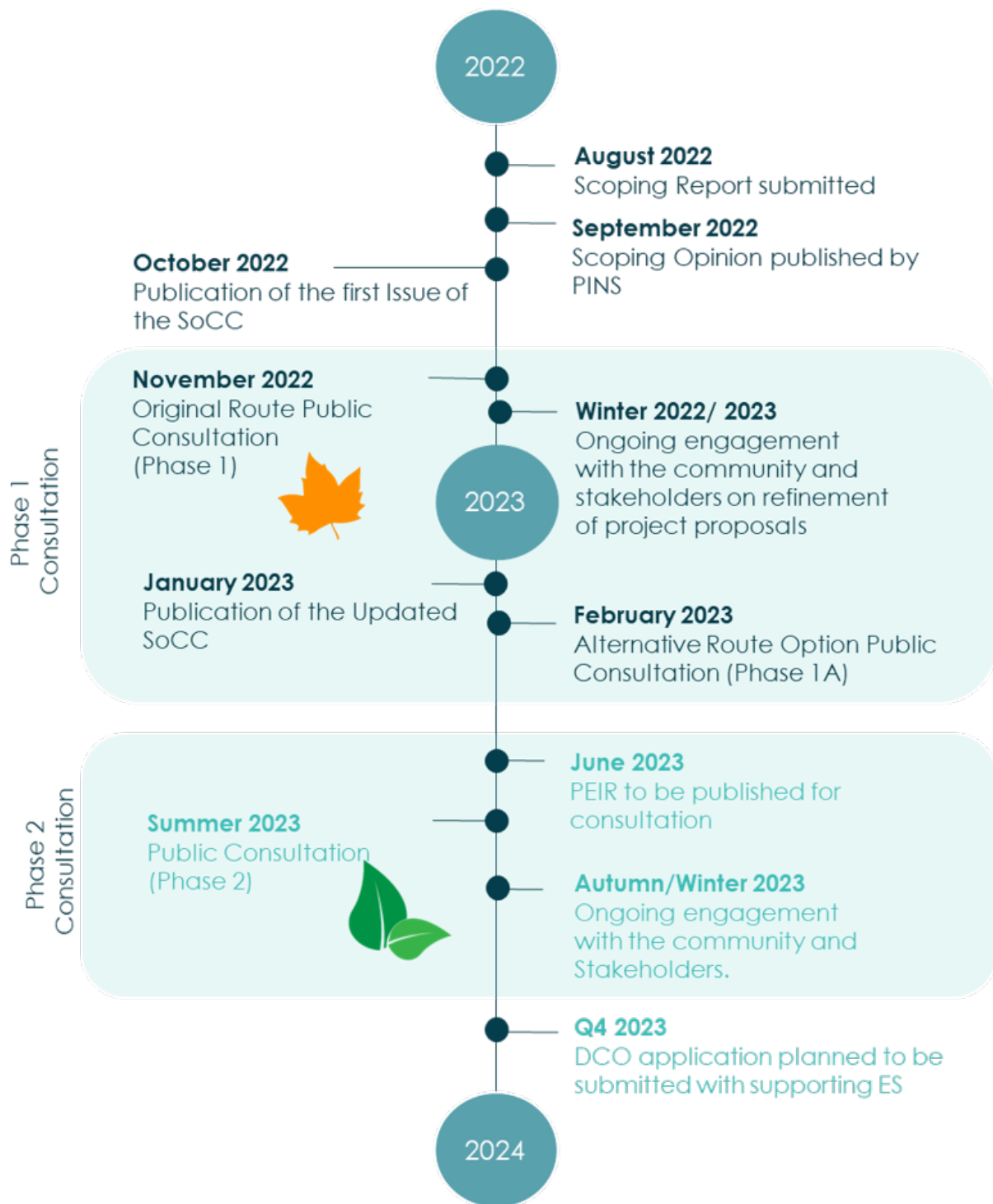


Figure 1 Consultation Timeline

2 Where to find the Consultation documents and how to engage

2.1 Consultation Dates

- 2.1.1 Consultation runs from Wednesday 7th June to 11.59pm on Friday 21st July.
- 2.1.2 Feedback received within this timeframe will be used to inform the next steps of design.
- 2.1.3 Public Information Days will be held from Tuesday the 20th of June to Saturday the 1st of July. The details are included below in section 2.3. A leaflet with all of the details relating to these events will be sent to every address within our consultation area, and details will also be available on the Outer Dowsing website.
- 2.1.4 We will also host a virtual exhibition on our website at www.outerdowsing.com between the 20 June and 21 July 2023.

2.2 Consultation Materials

- 2.2.1 The Phase 2 Consultation Materials will be published on our Project website www.outerdowsing.com
- 2.2.2 We have placed printed copies of the Guide to the Phase 2 Consultation Submission and Non-Technical Summary (NTS) at the following information points, alongside USBs containing the Phase 2 materials:
 - Mablethorpe Library and Customer Service Centre,
 - Skegness Library,
 - Boston Library,
 - Pinchbeck Community Hub and Library,
 - Lincolnshire County Council,
 - East Lindsey District Council,
 - South Holland District Council, and
 - Boston Borough Council.
- 2.2.3 A printed copy of the NTS will be provided on request. Other items can be also be provided, but due to the size of the PEIR and some of the documents themselves, a charge may be incurred for printing and postage.
- 2.2.4 To request materials, or find out about our public events and information events, please visit www.outerdowsing.com or email contact@outerdowsing.com

2.3 Public Information Days and Online Events

- 2.3.1 We are holding events in Lincolnshire where the Phase 2 Consultation materials can be reviewed in person. The details of these events is included below and will be published on the Outer Dowsing website and in local papers. We will also send leaflets with details to every address within the Consultation zone.
- 2.3.2 A virtual exhibition for those unable to attend in person will be available on the Outer Dowsing Project website for the duration of the consultation period.
- 2.3.3 Online Webinars will include the same information as presented at the Public Information Days and available at the online exhibition. These webinars will offer the opportunity for those who attend to ask questions.

Venue	Date and Time
Wainfleet All Saints Coronation Hall High Street, Wainfleet, PE24 4BS	Tuesday 20 June 2pm-8pm
Anderby Village Hall Sea Road, Anderby, PE24 5YD	Wednesday 21 June 2pm-8pm
Old Leake Community Centre Furlongs Lane, Old Leake, PE22 9NX	Thursday 22 June 2pm-8pm
Online webinar and Q&A – www.outerdowsing.com	Wednesday 28 June 7pm-8pm
Online webinar and Q&A – www.outerdowsing.com	Thursday 29 June 2pm-3pm
Butterwick Village Hall Church Road, Butterwick, PE22 0HT	Friday 30 June 2pm-8pm
Fosdyke Village Hall Old Main Road, Fosdyke, PE20 2BU	Saturday 1 July 2pm-8pm

3 Consultation Material Structure and Document List

3.1 Structure

3.1.1 The Consultation Material Structure and Document List is presented in the following tables which provide a full list of all the documents made available at this stage and where they can be found.

3.1.2 For ease of navigation these documents are grouped into 8 Parts, which corresponds with their associated document reference numbers:

- Part 1 Guide to the Phase 2 Consultation Submission
- Part 2 Plans and Drawings
- Part 3 Draft Development Consent Order
- Part 4 Formal Notices
- Part 5 Consultation Overview
- Part 6 Preliminary Environmental Information Report (PEIR)
 - Volume 1 PEIR Chapters / Volume 2 PEIR Appendices
 - Introductory
 - Offshore
 - Onshore
 - Wider
- Section 7 Draft Without Prejudice Report to Inform Appropriate Assessment
- Section 8 Other Reports, Plans and Statements

3.2 Providing your feedback

3.2.1 We have arranged a number of different channels to listen to your views, so that you can provide your feedback in the way that best suits you.

- Visit our website at www.outerdowsing.com to leave feedback on our **Contact Page**
- Use a Feedback card available at www.outerdowsing.com, in the online virtual exhibition and at the Public Information Days
- Write to us free of charge at **FREPOST ODOW** (no other address or stamp required)
- Email us at contact@outerdowsing.com
- Call us free of charge on **0808 175 2970**

3.3 Document List

Table 1 Part 1: Guide to the Phase 2 Consultation Submission

Reference No.	Document Title	Summary of Content
1.1	Guide to the Phase Two Consultation Submission	This document provides a summary of the Phase 2 Consultation documentation, where it can be accessed and how to find the information or content you are searching for.

Table 2 Part 2: Draft Plans and Drawings

Reference No.	Document Title	Summary of Content
2.1	Draft Works Plans Onshore	Plan showing the Onshore and Landfall works as detailed in the draft DCO
2.2	Draft Works Plans Offshore	Plan showing the Offshore and Landfall works as detailed in the draft DCO
2.3	Draft Location Plan Onshore	Plan showing the Project Location Onshore
2.4	Draft Location Plan Offshore	Plan showing the Project Location Offshore
2.5	Draft Public Rights of Way Plan	Plan showing Public Rights of Way within proximity to the Project, including footpaths, bridleways and restricted byways
2.6	Draft Historic Environment Plan Onshore	Plan showing the Historical assets alongside the Project PEIR boundary including Listed Buildings, Scheduled Monuments and registered historic sites
2.7	Draft Statutory and Non-Statutory Nature Conservation Sites Onshore	Plan showing conservation sites onshore alongside the current Project boundary for context
2.8	Draft Statutory and Non-Statutory Nature Conservation Sites Offshore	Plan showing conservation sites offshore alongside the current Project boundary for context, with a wider UK Plan showing other Conservation Sites
2.9	Draft Onshore Crossings Plan	Plan showing where the Project may cross existing onshore assets, to be refined as the Project design progresses. This should be viewed alongside document 8.1.9 which is a table of all assets potentially being crossed within the PEIR Boundary.
2.10	Draft Offshore Crossings Plan	Plan showing where the Project may cross existing offshore assets, to be refined as the Project design progresses. This should be viewed alongside document 8.1.8 which is a table of all assets potentially being crossed within the PEIR Boundary.

Table 3 Part 3: Draft Development Consent Order

Reference No.	Document Title	Summary of Content
3.1	Draft Development Consent Order	The first draft of the Development Consent Order (DCO), to be consulted on with statutory Stakeholders. The final DCO will be provided by the Secretary of State to the Applicant upon Consent Award.

Table 4 Part 4: Scoping Report

Reference No.	Document Title	Summary of Content
4.1	Scoping Report	A full copy of the previously submitted Scoping Report (June 2022) for reference. Following publication of the Scoping Report, Outer Dowsing received a Scoping Opinion which detailed the items required for assessment within the DCO Application and consultation.

Table 5 Part 5: Consultation Summary

Reference No.	Document Title	Summary of Content
5.1	Consultation Summary	A document summarising consultation to date and sign posting to where specific detail can be found
5.1.1	Statement of Community Consultation	The consultation on the SoCC, and a copy of the final SoCC as drafted and agreed in consultation with the local authorities
5.1.2	Formal Notices	A list of the formal notices for consultation to date
5.1.3	Phase 1 Consultation Documentation	A summary of Phase 1 consultation documentation
5.1.4	Phase 1A Consultation Documentation	A summary of the Phase 1A consultation documentation
5.1.5	Community Liaison Group Documentation	A summary of the presentations and minutes of engagement to date with the Community Liaison Groups.

Table 6 Part 6 Preliminary Environmental Information Report

Reference No.	Document Title	Summary of Content
6.1	Non-Technical Summary	A standalone document providing an overview of the Project and a summary of the main findings of the Environmental Impact Assessment
Chapters 1 – 6 and their appendices are introductory documents. They set out the background to the Project, including the policy context, site selection, methodology and Consultation Process.		
6.1.1	Introduction	An introduction to the Project, the partners, and the PEIR consultation.
6.1.2	Need, Policy and Legislative Context	An overview of relevant policy and legislation pertaining to the Project and the need for offshore wind.

Reference No.	Document Title	Summary of Content
6.1.3	Project Description	A document providing detail of the maximum Project engineering parameters.
6.2.3.1	Cable Burial Risk Assessment	A technical appendix detailing the cable burial risks within the Inner Dowsing Race Bank and North Ridge Special Area of Conservation.
6.2.3.2	Underwater Noise Assessment	A technical appendix of the worst case scenario Project parameters assessed regarding underwater noise.
6.2.3.3	Onshore Substation Design Principles	A summary of the Project's design principles for the Onshore Substation (OnSS).
6.1.4	Site Selection and Consideration of Alternatives	A document providing an overview of options considered during the Site Selection process.
6.2.4.1	Landfall Assessment & Offshore ECC Route Optioneering	A document providing the full assessment relating to Identification of the Landfall Zones, Export cable Landfall Options and Offshore ECC Route Options.
6.1.5	EIA Methodology	A document detailing the methodology used to undertake the environmental Impact Assessment.
6.2.5.1	Cumulative Effects Assessment Longlist Offshore	An assessment of the potential effects of other projects also currently in planning which may result in cumulative impacts on a receptor.
6.2.5.2	Cumulative Effects Assessment Longlist Onshore	An assessment of the potential effects of other projects also currently in planning which may result in cumulative impacts on a receptor.
6.1.6	Consultation Process	A Chapter detailing the Consultation Process specifically related to the Environmental Impact Assessment.
Chapters 7 – 18 and their associated appendices, are technical chapters and reports containing detailed assessments for each offshore topics.		
6.1.7	Marine Physical Processes	A technical chapter which includes baseline information, a summary of topic specific consultation to date, an assessment of worst case scenario impacts, embedded and possible additional mitigation measures and conclusions based on the current project parameters.
6.2.7.1	Physical Processes Technical Baseline	A technical appendix of baseline information to support the chapter.
6.2.7.2	Physical Processes Modelling Report	A technical modelling report appendix to support the chapter.
6.1.8	Marine Water and Sediment Quality	A technical chapter which includes baseline information, a summary of topic specific consultation to date, an assessment of worst case scenario impacts, embedded and possible additional mitigation measures and conclusions based on the current project parameters.
6.2.8.1	Water Framework Directive	The document presents the findings of the Water Framework Directive Compliance Assessment.
6.1.9	Benthic and Intertidal Ecology	A technical chapter which includes baseline information, a summary of topic specific consultation to date, an assessment of worst case scenario impacts, embedded and possible additional

Reference No.	Document Title	Summary of Content
		mitigation measures and conclusions based on the current project parameters.
6.2.9.1	Benthic Ecology Technical Report (Array)	A technical appendix of baseline survey information to support the chapter.
6.2.9.2	Benthic Ecology Technical Report (ECC)	A technical appendix of baseline survey information to support the chapter.
6.2.9.3	Intertidal Technical Report	A technical appendix of baseline survey information to support the chapter.
6.2.9.4	Marine Conservation Zone Assessment	A technical appendix assessing baseline information relating to Marine Conservation Zones, the to support the chapter.
6.1.10	Fish and Shellfish Ecology	A technical chapter which includes baseline information, a summary of topic specific consultation to date, an assessment of worst case scenario impacts, embedded and possible additional mitigation measures and conclusions based on the current project parameters.
6.2.10.1	Fish and Shellfish Ecology Technical Baseline	A technical appendix of baseline information to support the chapter.
6.1.11	Marine Mammals	A technical chapter which includes baseline information, a summary of topic specific consultation to date, an assessment of worst case scenario impacts, embedded and possible additional mitigation measures and conclusions based on the current project parameters.
6.2.11.1	Marine Mammals Technical Baseline	A technical appendix of baseline information to support the chapter.
6.1.12	Offshore and Intertidal Ornithology	A technical chapter which includes baseline information, a summary of topic specific consultation to date, an assessment of worst case scenario impacts, embedded and possible additional mitigation measures and conclusions based on the current project parameters.
6.2.12.1	Ornithology Technical Baseline	A technical appendix of baseline information to support the chapter.
6.2.12.2	Collision Risk Modelling Assessment Annex	A technical appendix of modelled data and an assessment to support the chapter.
6.2.12.3	Displacement Assessment Annex	A technical appendix of modelled data and an assessment to support the chapter.
6.1.13	Marine and Intertidal Archaeology	A technical chapter which includes baseline information, a summary of topic specific consultation to date, an assessment of worst case scenario impacts, embedded and possible additional mitigation measures and conclusions based on the current project parameters.
6.2.13.1	Marine and Intertidal	A technical appendix of baseline information to support the chapter.

Reference No.	Document Title	Summary of Content
	Archaeological Technical Report	
6.1.14	Commercial Fisheries	A technical chapter which includes baseline information, a summary of topic specific consultation to date, an assessment of worst case scenario impacts, embedded and possible additional mitigation measures and conclusions based on the current project parameters.
6.2.14.1	Commercial Fisheries Technical Report	A technical appendix of baseline information to support the chapter.
6.1.15	Shipping and Navigation	A technical chapter which includes baseline information, a summary of topic specific consultation to date, an assessment of worst case scenario impacts, embedded and possible additional mitigation measures and conclusions based on the current project parameters.
6.2.15.1	Navigational Risk Assessment	A technical assessment of baseline information, assessed to support the chapter.
6.1.16	Aviation, Radar, Military and Communication	A technical chapter which includes baseline information, a summary of topic specific consultation to date, an assessment of worst case scenario impacts, embedded and possible additional mitigation measures and conclusions based on the current project parameters.
6.2.16.1	Aviation Technical Report	A technical appendix of baseline information to support the chapter.
6.1.17	Seascape, Landscape and Visual	A technical chapter which includes baseline information, a summary of topic specific consultation to date, an assessment of worst case scenario impacts, embedded and possible additional mitigation measures and conclusions based on the current project parameters.
6.2.17.1	SLVIA Methodology	A technical appendix detailing the methodology used to undertake the assessment in the chapter.
6.2.17.2	SLVIA Figures, Wirelines and Visualisations	A technical appendix of the visualisations to support the chapter assessment and conclusions.
6.1.18	Marine Infrastructure and Other Users	A technical chapter which includes baseline information, a summary of topic specific consultation to date, an assessment of worst case scenario impacts, embedded and possible additional mitigation measures and conclusions based on the current project parameters.
6.2.18.1	Helicopter Access Report	A report detailing baseline and impact assessment of potential impacts of the project on helicopter operations to existing offshore installation.
Chapters 19 – 29 and their associated appendices, are technical chapters and reports containing detailed assessments for each offshore topics.		
6.1.19	Onshore Air Quality	A technical chapter which includes baseline information, a summary of topic specific consultation to date, an assessment of worst case scenario impacts, embedded and possible additional

Reference No.	Document Title	Summary of Content
		mitigation measures and conclusions based on the current project parameters.
6.2.19.1	Onshore Air Quality Construction Phase Dust Assessment Methodology	A technical appendix detailing the methodology used in the assessment within the chapter
6.2.19.2	Non-Road Mobile Machinery Emissions Assessment	A technical appendix detailing the assessment of non-road mobile machinery emissions to support the chapter
6.2.19.3	Offshore Activities Assessment	A technical appendix to inform the assessment of potential onshore air quality impacts arising from offshore activities generated by the Project, to support the chapter
6.1.20	Onshore Archaeology and Cultural Heritage	A technical chapter which includes baseline information, a summary of topic specific consultation to date, an assessment of worst case scenario impacts, embedded and possible additional mitigation measures and conclusions based on the current project parameters.
6.2.20.1	Onshore Archaeology and Cultural Heritage Desk-Based Assessment	A technical appendix of baseline information to support the chapter.
6.2.20.2	Onshore Archaeology and Cultural Heritage Statement	A technical appendix detailing the results of a preliminary Heritage Desk Based Assessment prepared in respect to potential indirect effects on heritage assets to support the chapter assessment.
6.1.21	Onshore Ecology	A technical chapter which includes baseline information, a summary of topic specific consultation to date, an assessment of worst case scenario impacts, embedded and possible additional mitigation measures and conclusions based on the current project parameters.
6.2.21.1	Onshore Ecology Ecological Desk-Based Assessment	A technical appendix of baseline information to support the chapter.
6.2.21.2	Initial Habitat Survey	A technical appendix of survey results to support the chapter.
6.2.21.3	Preliminary Roost Surveys for Bats	A technical appendix of survey results to support the chapter.
6.2.21.4	Badger Surveys (Confidential)	Issued confidentially to relevant statutory stakeholders only.
6.1.22	Onshore Ornithology	A technical chapter which includes baseline information, a summary of topic specific consultation to date, an assessment of worst case scenario impacts, embedded and possible additional mitigation measures and conclusions based on the current project parameters.
6.2.22.1	Ornithology Desk Study	A technical appendix of baseline information to support the chapter

Reference No.	Document Title	Summary of Content
6.2.22.2	Ornithology Desk Study Annex (Confidential)	Issued confidentially to relevant statutory stakeholders only.
6.2.22.3	Winter Bird Survey 2022 - 2023	A technical appendix of survey results to support the chapter
6.2.22.4	Bird Species List	A species list to support the chapter
6.1.23	Geology and Ground Conditions	A technical chapter which includes baseline information, a summary of topic specific consultation to date, an assessment of worst case scenario impacts, embedded and possible additional mitigation measures and conclusions based on the current project parameters.
6.1.24	Hydrology, Hydrogeology and Flood Risk	A technical chapter which includes baseline information, a summary of topic specific consultation to date, an assessment of worst case scenario impacts, embedded and possible additional mitigation measures and conclusions based on the current project parameters.
6.1.25	Land Use	A technical chapter which includes baseline information, a summary of topic specific consultation to date, an assessment of worst case scenario impacts, embedded and possible additional mitigation measures and conclusions based on the current project parameters.
6.1.26	Noise and Vibration	A technical chapter which includes baseline information, a summary of topic specific consultation to date, an assessment of worst case scenario impacts, embedded and possible additional mitigation measures and conclusions based on the current project parameters.
6.2.26.1	Sound Level Meter Calibration Certificates	A technical appendix detailing the noise and vibration monitoring locations assessed in the chapter
6.2.26.2	Full Baseline Survey Results	A technical appendix of baseline information to support the chapter.
6.2.26.3	Construction plant list	A technical appendix of information to support the chapter.
6.2.26.4	Noise model outputs	A technical appendix of modelling information to support the chapter.
6.1.27	Traffic and Transport	A technical chapter which includes baseline information, a summary of topic specific consultation to date, an assessment of worst case scenario impacts, embedded and possible additional mitigation measures and conclusions based on the current project parameters.
6.2.27.1	Traffic and Transport Technical Baseline Report	A technical appendix of baseline information to support the chapter.
6.2.27.2	Traffic and Transport Trip Generation	A technical appendix of modelling information to support the chapter.
6.1.28	Landscape and Visual Assessment	A technical chapter which includes baseline information, a summary of topic specific consultation to date, an assessment of

Reference No.	Document Title	Summary of Content
		worst case scenario impacts, embedded and possible additional mitigation measures and conclusions based on the current project parameters.
6.2.28.1	Landscape and Visual Assessment Visualisations	A technical appendix of the visualisations to support the chapter assessment and conclusions.
Chapter 29 – 31 and their associated appendices, are technical chapter and Baseline Reports which detail the Wider Topics		
6.1.29	Socio-Economic Characteristics	A technical chapter which includes baseline information, a summary of topic specific consultation to date, an assessment of worst case scenario impacts, embedded and possible additional mitigation measures and conclusions based on the current project parameters.
6.1.30	Human Health	A technical chapter which includes baseline information, a summary of topic specific consultation to date, an assessment of worst case scenario impacts, embedded and possible additional mitigation measures and conclusions based on the current project parameters.
6.2.30.1	Population Baseline	A technical appendix of baseline information to support the chapter.
6.1.31	Climate Change	A technical chapter presenting the results to date of the assessment for the potential impacts of Outer Dowsing Offshore Wind on Climate Change.

Table 7 Part 7: Draft Report to Inform Appropriate Assessment

Reference No.	Document Title	Summary of Content
7.1	Draft Without Prejudice Report to Inform Appropriate Assessment	The Draft Report to Inform Appropriate Assessment (RIAA) is a technical document drafted as part of the Habitats Regulations Assessment. It details the habitat types and species for which the sites are protected, relevant to the Project and examines the implications of the proposed project on designated features present on that site and the conservation objectives of the site.
7.2	Draft Without Prejudice Benthic Compensation Strategy	This document outlines the ‘without prejudice’ benthic compensation options being considered by the Project. It discusses the proposed road map and strategy towards developing the final compensation options to support the ‘without prejudice’ derogation case should it be required.
7.3	Draft Without Prejudice Offshore Ornithology Compensation Strategy	This document outlines the ‘without prejudice’ ornithology compensation options being considered by the Project. It discusses the proposed road map and strategy towards developing the final compensation options to support the ‘without prejudice’ derogation case should it be required.

Reference No.	Document Title	Summary of Content
7.4	Draft Without Prejudice Offshore Artificial Nesting Structures Ecological evidence and roadmap	This document outlines the ecological evidence base for Artificial Nesting Structures and sets out a road map and strategy towards developing this as a final compensation option to support the 'without prejudice' derogation case should it be required.
7.5	Draft Without Prejudice Predator Reduction Ecological Evidence and Roadmap	This document outlines the ecological evidence base for Predator Control Ecological Evidence and sets out a road map and strategy towards developing this as a final compensation option to support the 'without prejudice' derogation case should it be required.
7.6	Draft Without Prejudice Fisheries Management Ecological Evidence and Roadmap	This document outlines the ecological evidence base for Fisheries management and sets out a road map and strategy towards developing this as a final compensation option to support the 'without prejudice' derogation case should it be required.

Table 8 Part 8: Other Reports, Plans and Statements

Reference No.	Document Title	Summary of Content
8.1.1	Outline Noise and Vibration Management Plan	A high level outline plan to manage Noise and Vibration and reduce impacts. This will form part of the Outline Code of Construction Practice to be submitted as part of the DCO Application
8.1.2	Air quality management plan	A high level outline plan to manage Air Quality and reduce impact. This will form part of the Outline Code of Construction Practice to be submitted as part of the DCO Application
8.1.3	Outline Soil management plan	A high level outline plan to manage Soils and reduce impacts. This will form part of the Outline Code of Construction Practice to be submitted as part of the DCO Application
8.1.4	Outline Pollution Prevention and Emergency Incident Response Plan	A high level outline plan to prevent pollution and response in the event of an emergency occurrence. This will form part of the Outline Code of Construction Practice to be submitted as part of the DCO Application
8.1.5	Outline Construction Traffic Management Plan	A high level outline plan to manage construction traffic and reduce impacts. This will form part of the Outline Code of Construction Practice to be submitted as part of the DCO Application
8.1.6	Outline Travel Plan	A high level outline plan to manage project related travel. This will form part of the Outline Code of Construction Practice to be submitted as part of the DCO Application
8.1.7	Outline Public Access Management Plan	A high level outline plan to manage Public Access and reduce impacts. This will form part of the Outline Code of Construction Practice to be submitted as part of the DCO Application
8.1.8	Outline Preliminary Crossing Schedule Offshore	A Tabulated Schedule of every potential offshore crossing within the PEIR Boundary, which aligns with Plan 2.10. This will form part of the Outline Code of Construction Practice to be submitted as part of the DCO Application

Reference No.	Document Title	Summary of Content
8.1.9	Outline Preliminary Crossing Schedule Onshore	A Tabulated Schedule of every potential onshore crossing within the PEIR Boundary, which aligns with Plan 2.9. This will form part of the Outline Code of Construction Practice to be submitted as part of the DCO Application.
8.1.10	Outline Artificial Light Emissions Management Plan	A high level outline plan for Artificial Light emissions. This will be updated and will form part of the Outline Code of Construction Practice to be submitted as part of the DCO Application.
8.2	Planning Statement	A summary of the relevant Planning and Policy guidance and their relevance to the Project.
8.3	Outline Biodiversity and Marine Net Gain Principles and Approach	A high level summary document outlining the evolving policy context to Biodiversity and Marine Net Gain and the Project's approach to Biodiversity Net Gain and the principles of Marine Net Gain.
8.4	Outline Marine Mammal Mitigation Protocol	The Outline Marine Mammal Mitigation Protocol (MMMP) sets out the potential contingency measures which may be proposed to reduce the risk of permanent threshold shift (PTS) auditory injury to marine mammal species from pile driving activity at the Project.
8.5	Outline Marine Archaeological Written Scheme of Investigation	A document that forms the basis for mitigation and agreement between the Applicant, its contractors, and relevant regulators for known and potential marine and intertidal archaeological and cultural heritage receptors.
8.6	Outline Onshore Archaeological Written Scheme of Investigation	A document that forms the basis for mitigation and agreement between the Applicant, its contractors, and relevant regulators for known and potential onshore archaeological and cultural heritage receptors.
8.7	Landscape and Ecology Design Principles Plan	A document detailing the Project's design principles in relation to Landscape and Ecology Design. This information will be updated and included in the Outline Landscape and Ecology Mitigation Scheme submitted as part of the DCO Application.