

Outer Dowsing Offshore Wind

Phase 2 Consultation

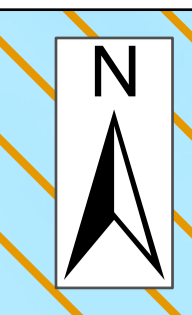
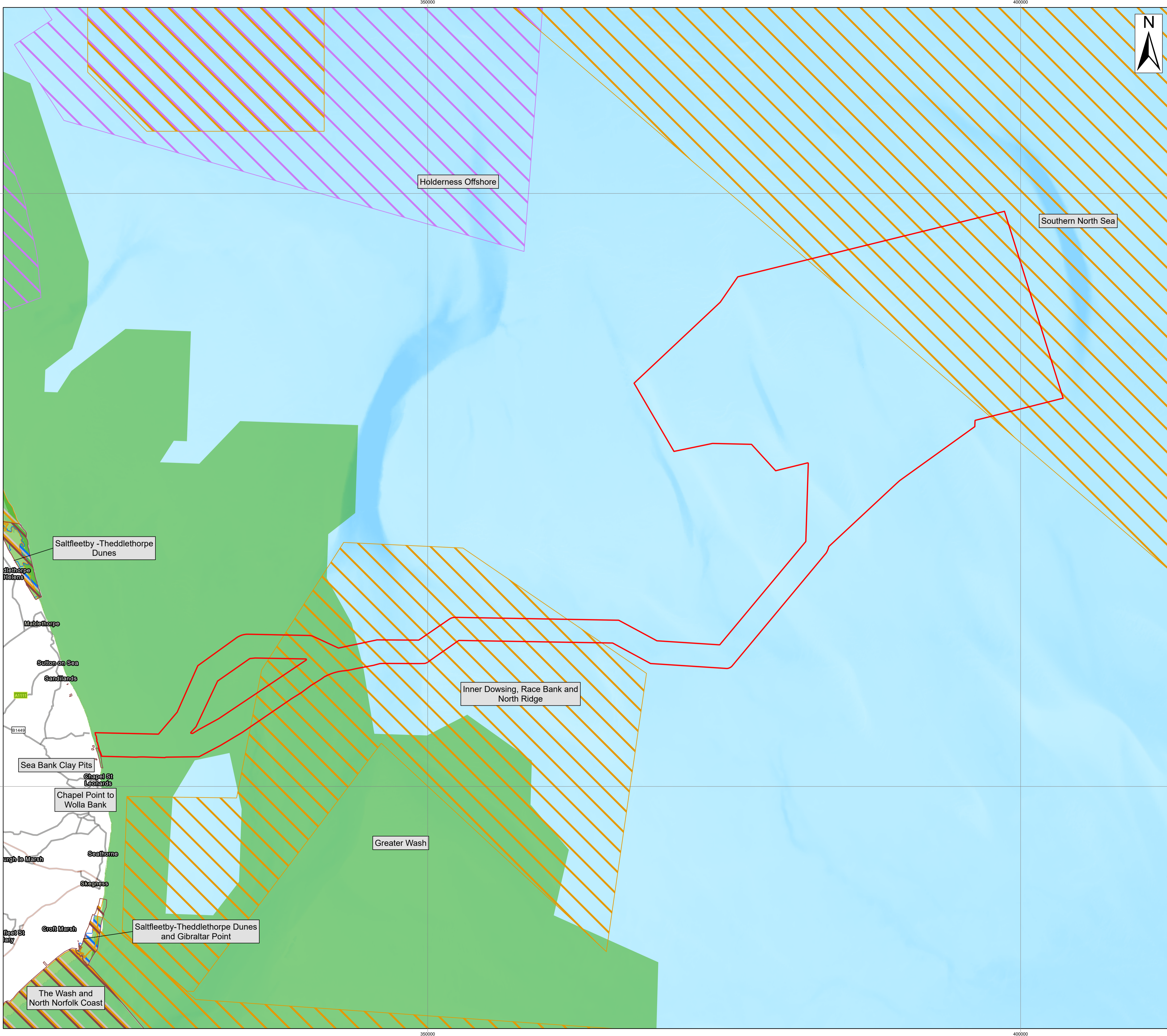
Draft Statutory & Non-statutory Nature Conservation Sites - Offshore

Date: June 2023

Outer Dowsing Document No: 2.08

Internal Reference: PP1-ODOW-DEV-CS-PLN-0008

Rev: V1.0

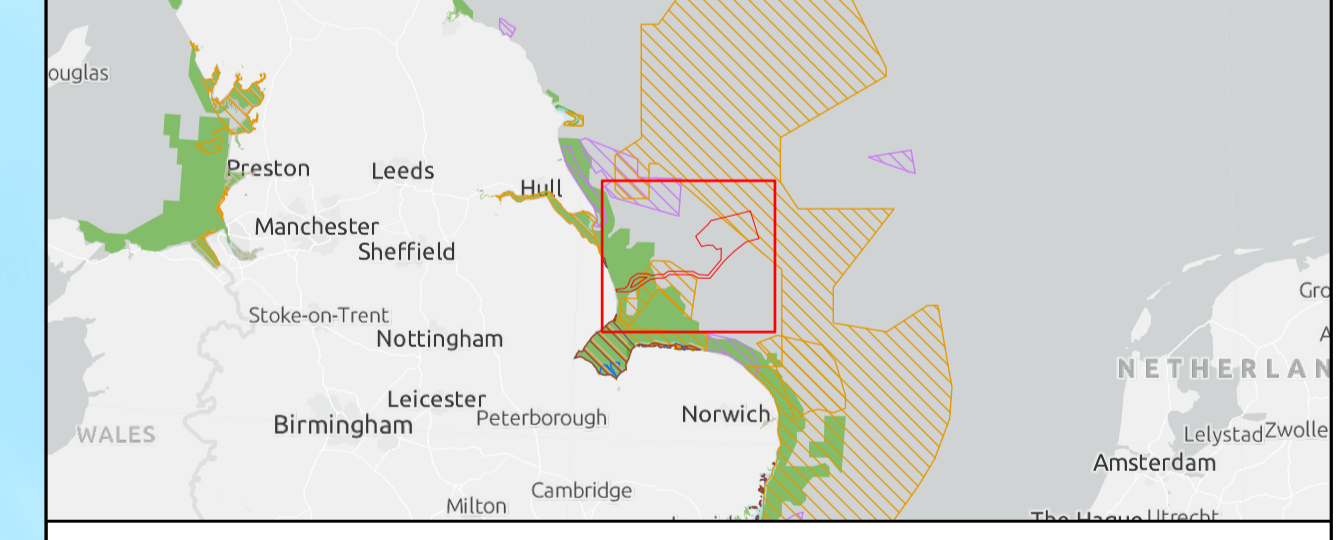
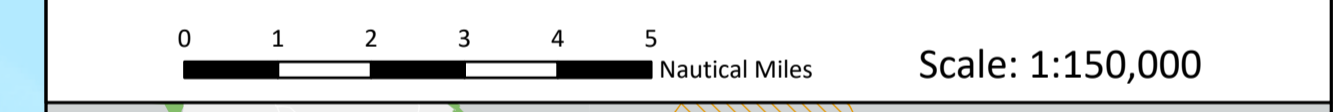


- Legend**
- PEIR Boundary
 - Sites Of Special Scientific Interest
 - Ramsar
 - National Nature Reserves
 - Special Areas Of Conservation
 - Marine Conservation Zones
 - Special Protection Areas
 - Heritage Coasts

Source:
 Contains Esri UK, Esri, HERE, Garmin, FAO, NOAA, USGS, Esri UK, Esri, HERE, Garmin, Foursquare, METI/NASA, USGS.
 Local Records derived from data provided by Lincolnshire Environmental Records Centre (December 2022). © Natural England copyright. Contains Ordnance Survey data © Crown copyright and database right 2023. All Rights Reserved.

Notes:	Status:
	FINAL

Offshore Coordinate System
 Datum: WGS 1984
 Spheroid: WGS 1984
 Projection: UTM Zone 31N
 Central Meridian: 3 E
 Vertical Reference: LAT (Lowest Astronomical Tide)



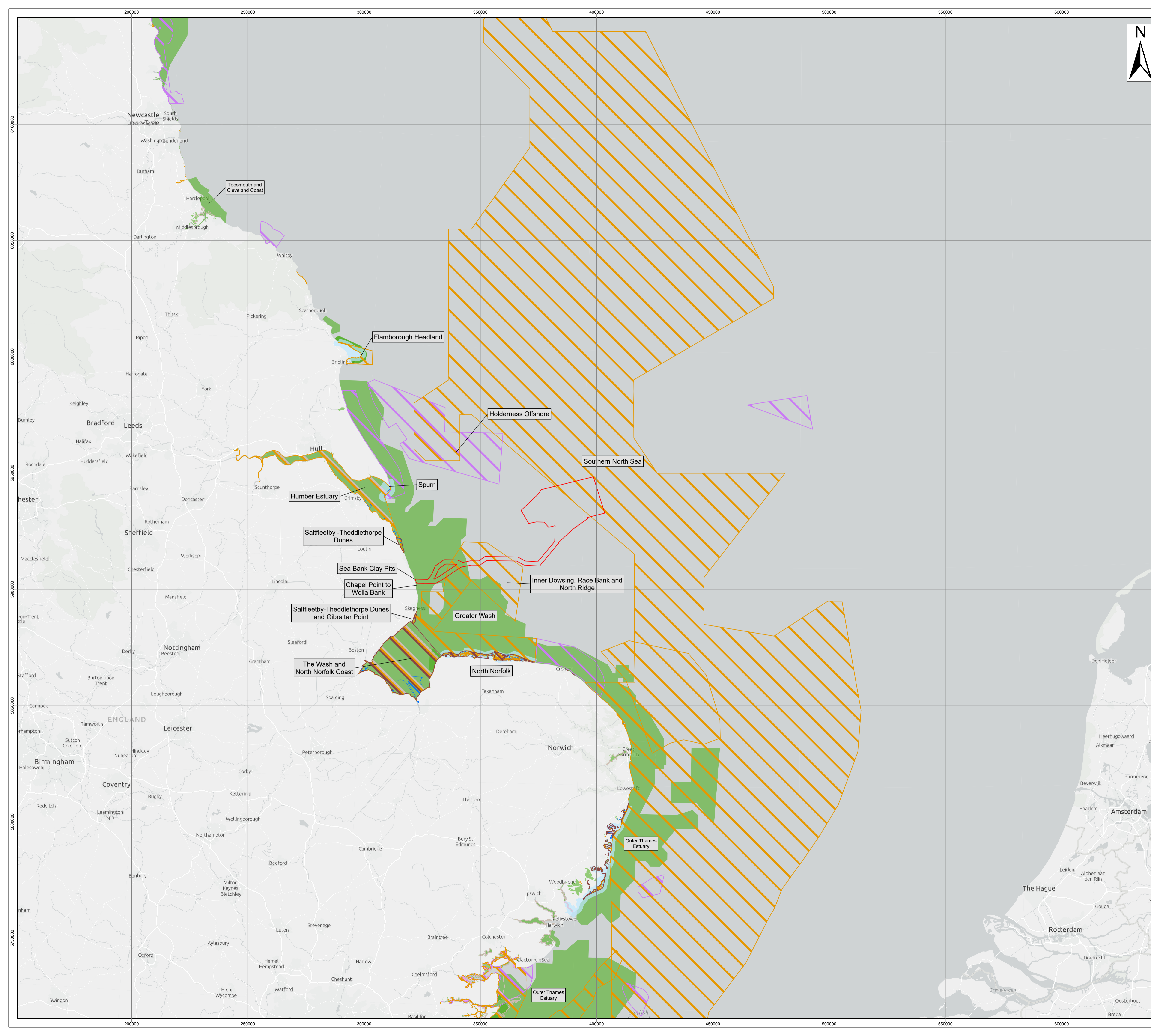
Outer Dowsing Offshore Wind 2.08 Statutory and Non-Statutory Nature Conservation Sites Offshore Phase 2 Consultation

Drawing No: PP1-ODOW-DEV-CS-PLN-0008

Drawing 1 of 2			Page Size: A1		
Rev No:	Date	Description	Drawn	Checked	Approved
V1	30.05.2023	First Issue	SR/WP	PM	DW



This document may only be used for the purpose for which it was commissioned and in accordance with the terms of engagement for that commission. Unauthorised use of this document in any form whatsoever is prohibited.



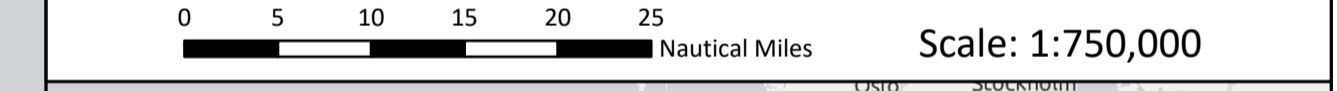
- Legend**
- PEIR Boundary
 - Sites Of Special Scientific Interest
 - Ramsar
 - National Nature Reserves
 - Special Areas Of Conservation
 - Local Nature Reserve
 - Marine Conservation Zones
 - Heritage Coasts
 - Special Protection Areas

Source:
 Contains Esri UK, Esri, Garmin, FAO, NOAA, USGS, Esri UK, Esri, HERE, Garmin, Foursquare, FAO, METI/NASA, USGS.
 Local Records derived from data provided by Lincolnshire Environmental Records Centre (December 2022). © Natural England copyright. Contains Ordnance Survey data © Crown copyright and database right 2023. All Rights Reserved.

Notes:

Status:
FINAL

Offshore Coordinate System
 Datum: WGS 1984
 Spheroid: WGS 1984
 Projection: UTM Zone 31N
 Central Meridian: 3 E
 Vertical Reference: LAT (Lowest Astronomical Tide)



Outer Dowsing Offshore Wind 2.08 Statutory and Non-Statutory Nature Conservation Sites Offshore Phase 2 Consultation

Drawing No: PP1-ODOW-DEV-CS-PLN-0008

Drawing 2 of 2 Page Size: A1

Rev No:	Date	Description	Drawn	Checked	Approved
V1	30.05.2023	First Issue	SR/WP	PM	DW



This document may only be used for the purpose for which it was commissioned and in accordance with the terms of engagement for that commission. Unauthorised use of this document in any form whatsoever is prohibited.