

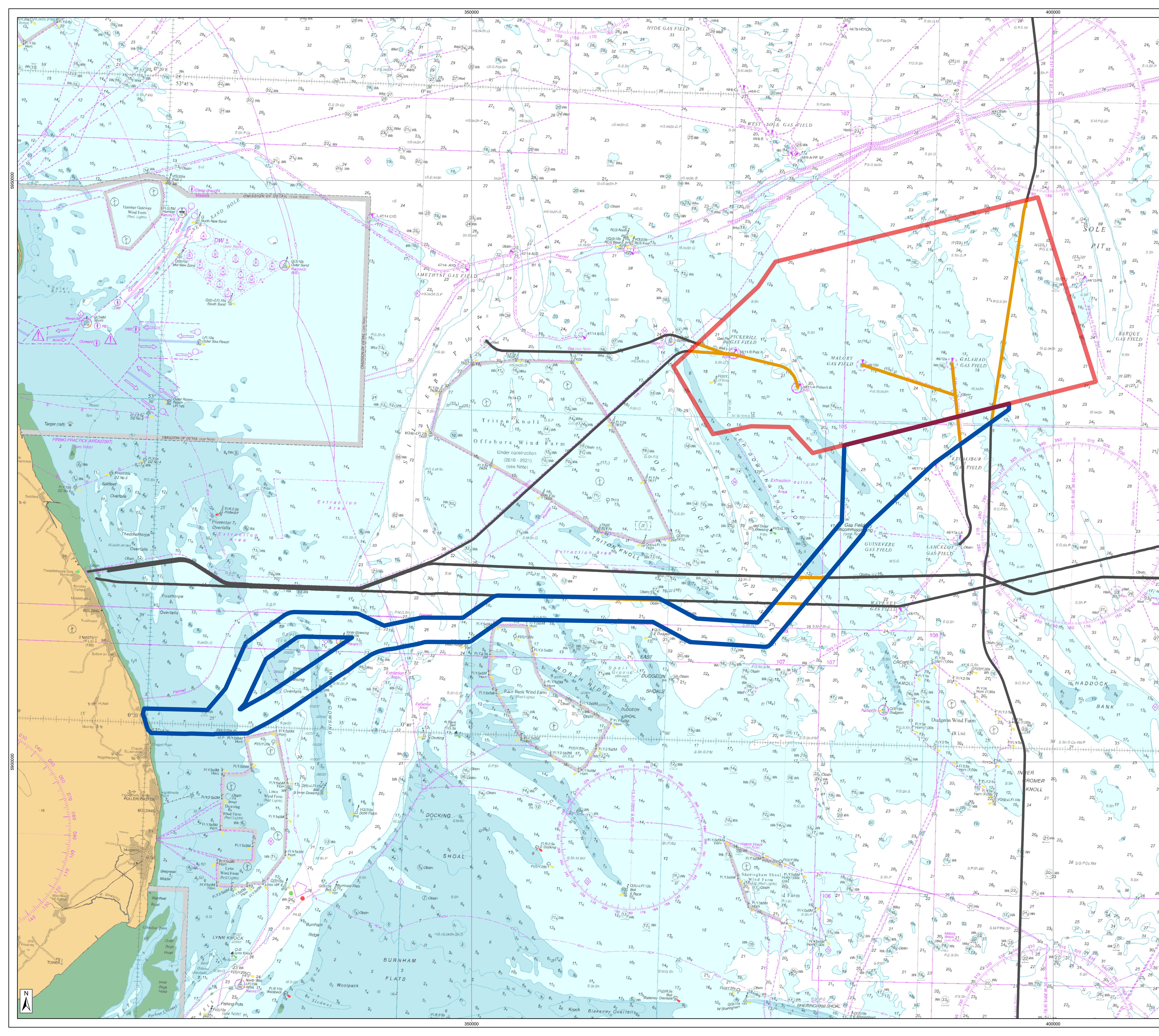
Outer Dowsing Offshore Wind Phase 2 Consultation Draft Crossing Plans - Offshore

Date: June 2023

Outer Dowsing Document No: 2.10

Internal Reference: PP1-ODOW-DEV-CS-PLN-0010

Rev: V1.0



- Legend**
- ▬ Array Area
 - ▬ Offshore Export Cable Corridor
 - ▬ Potential Pipeline Locations
 - ▬ Subsea Pipelines - NSTA

Notes:

Offshore Coordinate System
 Datum: WGS 1984
 Spheroid: WGS 1984
 Projection: UTM Zone 31N
 Central Meridian: 3 E
 Vertical Reference: LAT (Lowest Astronomical Tide)



**Outer Dowsing Offshore Wind
 2.10 Offshore Crossing Plan
 Phase 2 Consultation**

Drawing No: PP1-ODOW-DEV-CS-PLN-0010

Drawing 1 of 1		Page Size: A1			
Rev No:	Date	Description	Drawn	Checked	Approved
V1	19/05/23	Offshore Crossing Plan	GC	DW	BT



This document may only be used for the purpose for which it was commissioned and in accordance with the terms of engagement for that commission. Unauthorised use of this document in any form whatsoever is prohibited.